

MV SHARON**ADMINISTRATIVE DETAILS**

Shipsname : Mv Sharon
 Nationality : Netherlands
 Port of registry : Delfzijl
 Call sign : PHQA
 IMO number : 9187136
 Type of vessel : General Cargo
 Class : BV1 100 A5 E1 DBC DG Multi-purpose Ship
 P&I : Lodestar Marine Ltd.
 Build / Yard : Damen Ship yard
 Date of delivery : 1999
 Class entry : GL

VESSEL'S CHARACTERISTICS

Gross tonnage : 2999
 Netto tonnage : 1714
 Deadweight : 5052
 DWCC summer/winter : Abt 4750/4650
 LOA : 94,99 m
 LPP : 90,26 m
 Beam moulded : 13,17 m
 Max. summer draft : 6,204 m
 Max. winter draft : 6,075 m
 Airdraft in ballast : 29,60 m
 Distance WL to HC : Abt 6,20 m in ballast
 Ice class : 1 C

HOLD CHARACTERISTICS

Number of holds / hatches : 1 hold fully box / 1 hatch
 Hold dimensions : 67,74 x 11,00 x 8,435 m
 Hatch cover type : Coops & Nieborg pontoon
 Grain / bale capacity : 6196 cbm / 217,121 cbt
 Movable bulkheads : 2 / 10 positions
 Tweendecks : No tweendecks
 Tanktop load : 18 t/sqm
Suitable for heavy cargo, capacity to load steel coals of max. 30 t.
 Hatches / aftdeck load : 1,6 t/sqm
 Container capacity : Hold 120 TEU
 Hatch 104 TEU

OPERATORS

Peak Chartering AS,
 Littleåsveien 49
 5132 Nyborg, Norway
 Tlf.:+4755535300
 E-mail: chartering@peakgroup.no

MANAGERS

Wagenborg Shipping

OWNERS

Eems beheer VI BV

COMMUNICATION FACILITIES

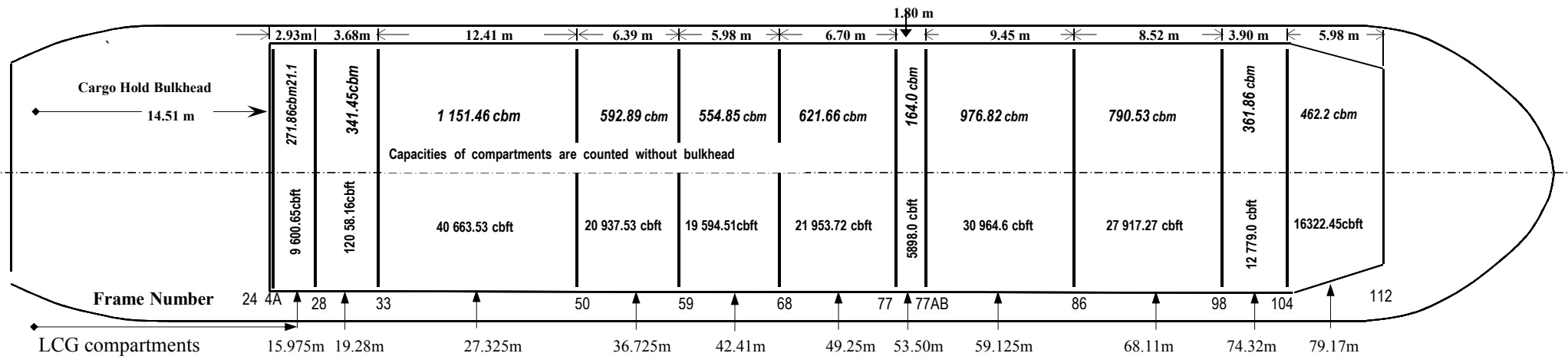
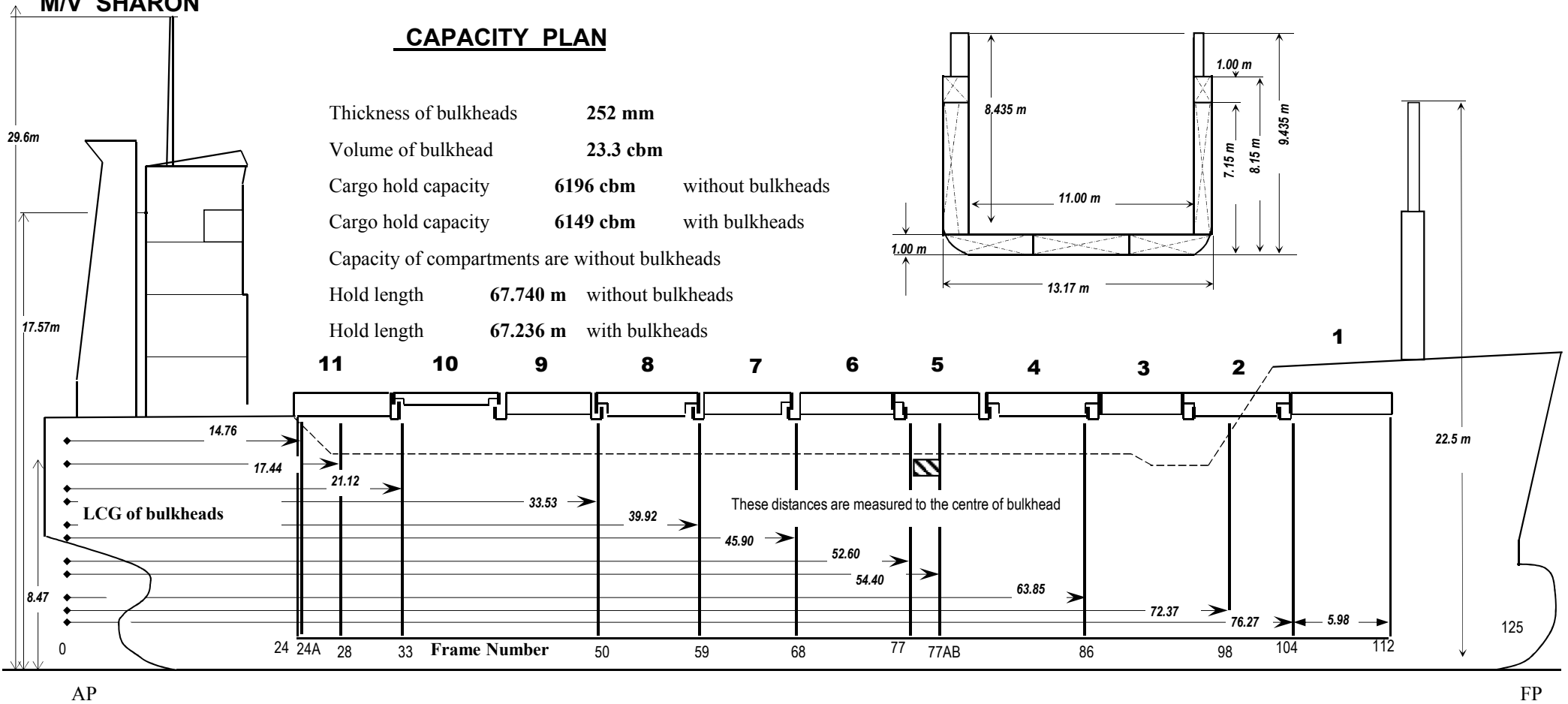
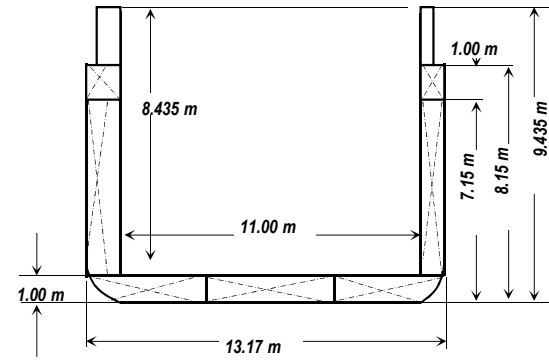
Mobile telephone : +31650296441
 VSat Vol P1 : +31596250992
 E-mail : sharon@shippinggroningen.nl
Emergency Contact number
 DPA 24/7 duty back up : +31622786503

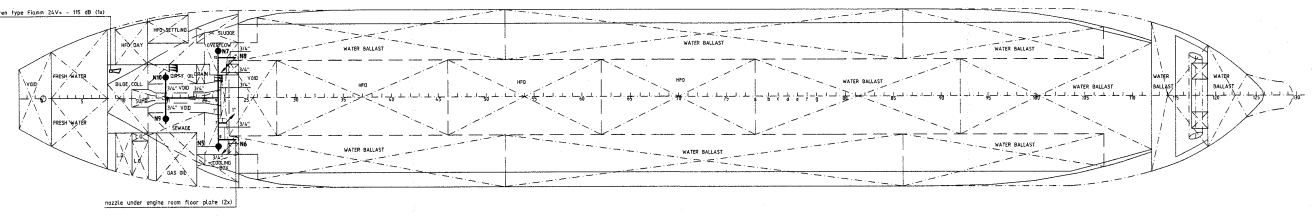
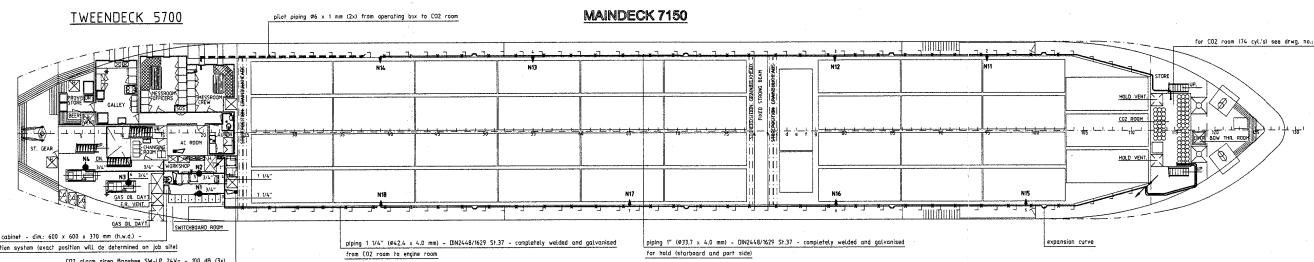
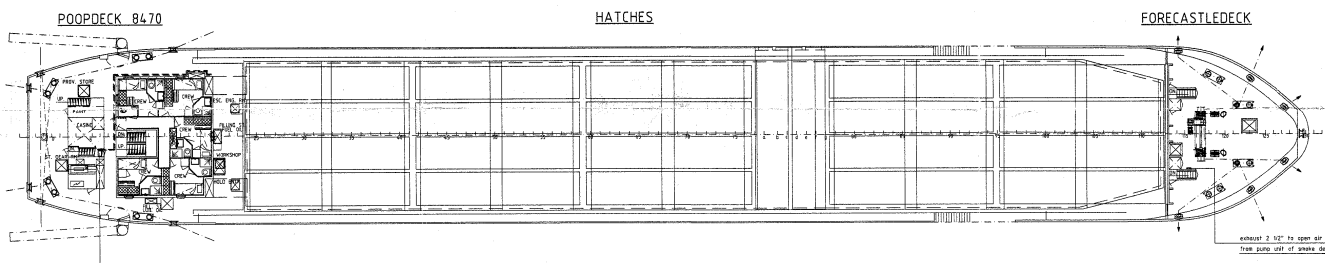
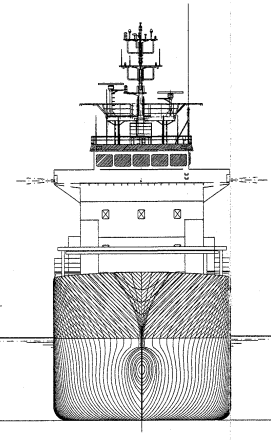
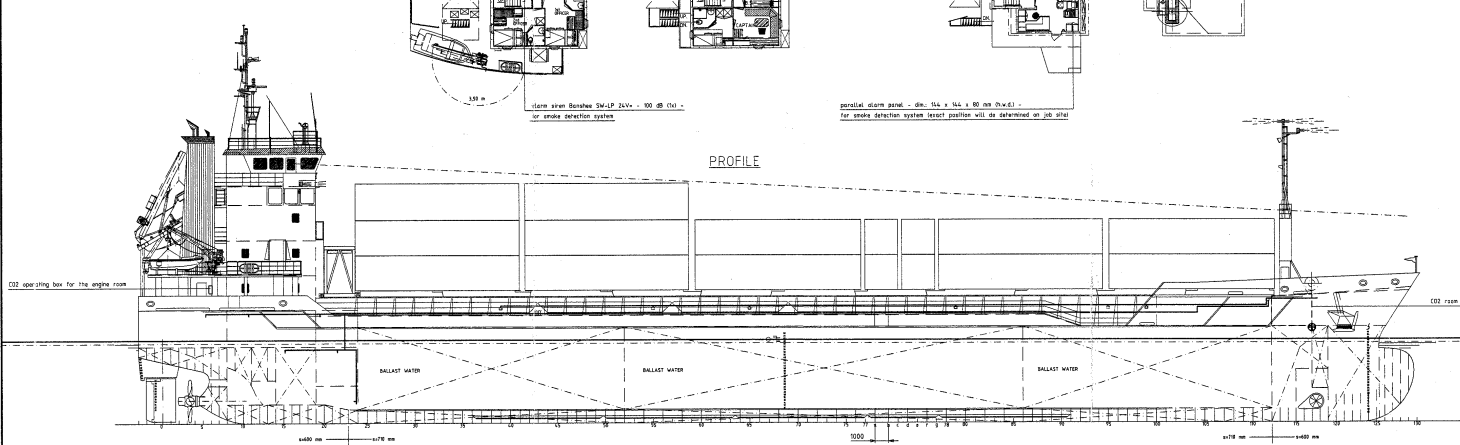
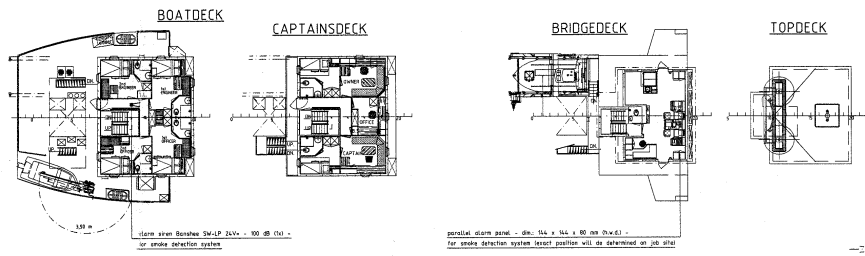
All details are given in good faith, believed to be correct but without guarantee.

M/V SHARON

CAPACITY PLAN

Thickness of bulkheads **252 mm**
 Volume of bulkhead **23.3 cbm**
 Cargo hold capacity **6196 cbm** without bulkheads
 Cargo hold capacity **6149 cbm** with bulkheads
 Capacity of compartments are without bulkheads
 Hold length **67.740 m** without bulkheads
 Hold length **67.236 m** with bulkheads





Notes:

- pipe diam (ignoring) for CO2 piping see drwg. no. 39826202-A5
- max. distance between pipe clamps 30 x 2 m
- where necessary automatic drains shall be provided in CO2 piping

NO.	DATE	BY	CHK.	APP.
01				
02				
03				
04				
05				
06				
07				
08				
09				
10				
11				
12				
13				
14				
15				
16				
17				
18				
19				
20				
21				
22				
23				
24				
25				
26				
27				
28				
29				
30				
31				
32				
33				
34				
35				
36				
37				
38				
39				
40				
41				
42				
43				
44				
45				
46				
47				
48				
49				
50				
51				
52				
53				
54				
55				
56				
57				
58				
59				
60				
61				
62				
63				
64				
65				
66				
67				
68				
69				
70				
71				
72				
73				
74				
75				
76				
77				
78				
79				
80				
81				
82				
83				
84				
85				
86				
87				
88				
89				
90				
91				
92				
93				
94				
95				
96				
97				
98				
99				
100				

PRINCIPAL PARTICULARS

Length o.a.	95.16 M
Length b.p.p.	90.25 M
Breadth mld.	13.17 M
Depth mld.	7.15 M
Draught mld.	appr. 6.19 M
Deadweight	appr. 5000 T
Capacities:	
Hold	appr. 6196 M3
Heavy Fuel Oil incl day and settl.	appr. 216 M3
Ballast Water	appr. 1727 M3
Fresh Water	appr. 41 M3
Gas Oil incl daytank aux. engines	appr. 4.4 M3
Containers:	
Hold	120 TEU
on Deck	104 TEU
Total	224 TEU
Ice class	IC
Speed 90% MCR at 6.19 meter	appr. 12.0 KN
Engine output 100% MCR	2200 kW
Gross tonnage	appr. 2999 GT

E DRAUGHT/DEADW. NO. OF CONT.		24-11-98
U	UPDATED	JPH 03-06-98
C	LENDING INFO	JH 01-07-98
N	ALTERATION	BT
APPROVED		
TITLE		
GENERAL ARRANGEMENT		
ALTERATION		
No. 0731 - 000-001		

DAMENSHIPYARDSHOOGGEZAND

Scheepswervenweg 13
 PO Box 79 9600AB Hoogeveen, HOLLAND
 Tel: 0598-380022 Fax: 0598-394863

SCALE 1 : 200 OWNER
 DRAWN BY B. GROOT DATE 03-06-98
 YARD No. 734