

**MV MARAS****ADMINISTRATIVE DETAILS**

Shipsname : Maras  
Nationality : Antigua & Barbuda  
Port of registry : St.John's  
Call sign : V2CH2  
IMO no. : 9380726  
Type of vessel : Gearless singledecker/General cargo  
Class : DNV - GL  
P&I : Hanseatic Underwriters  
Build : Damen Bergum  
Date delivered : 2007  
ISPS/ISM : YES / YES  
CLASS ENTRY : GL + 100 A5 E G General Cargo Ship,  
strengthened for heavy cargoes,  
equipped for the carriage of  
container + MV AUT SOLAS II-2 reg.19

**VESSEL'S CHARACTERISTICS**

Gross Tonnage : 2545  
Net Tonnage : 1460  
Deadweight : 3796 T  
Displacement : 4953 T  
Light ship : 1188 T  
LOA : 88,60 m  
LPP : 84,99 m  
Beam moulded : 12,50 m  
Depth moulded : 7,00 m  
Max. summer draft : 5,42 m  
Max. winter draft : 5,31 m  
FW Allowance : 0,117 m  
Freeboard at summer : 1,58 m  
Airdraft in ballast : 24,70 m

**OPERATORS/TC OWNERS**

Peak Chartering AS  
Littleåsveien 49  
5132 Nyborg, Norway  
+4755535300  
project@peakgroup.no  
chartering@peakgroup.no  
operation@peakgroup.no  
www.peakgroup.no

**HOLD CHARACTERISTICS**

One hold, box shaped : 61,96x10,12x8,43  
Pontoon hatch : 62,70 x 10,10 m  
Grain Capacity : 185,340 cbft  
Moveable Bulkheads : 2  
Tweendecks : no  
Tanktop load : 15 T/sqm<sup>2</sup>  
Hatches / load : 1,6mt/mt2

**MANAGERS**

Hermann Lohmann Bereederungen GmbH  
Hafenstraße 16  
D 49733 Haren  
Germany  
Tlf.: +49593273560  
E-mail: info@lohmann-shipping.de

**COMMUNICATION FACILITIES**

Telephone Mobile : +49 1724925232  
Email : mv.maras1@gmail.com  
Satcom C : +49 4030 197418

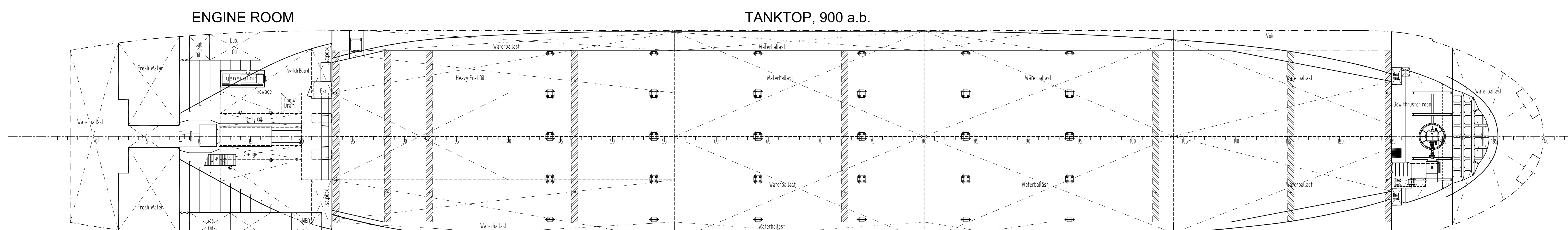
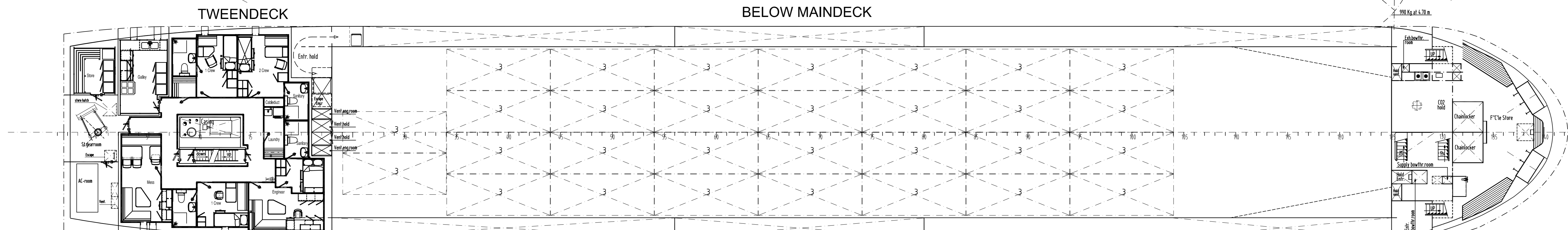
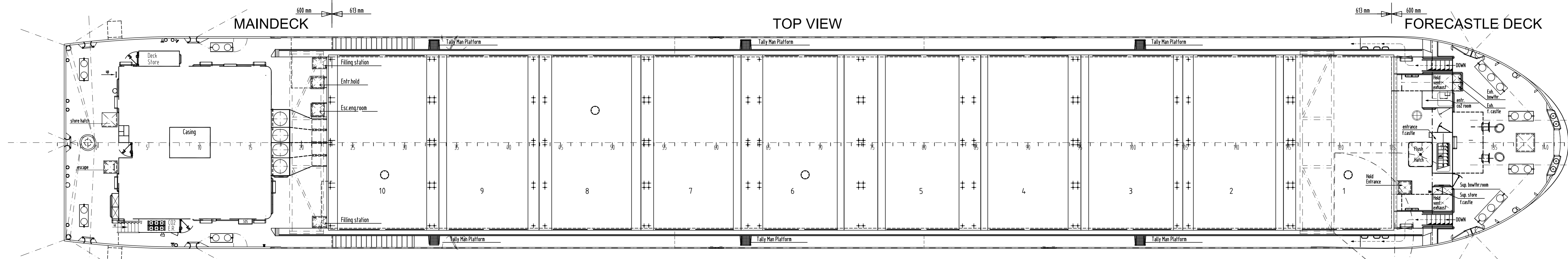
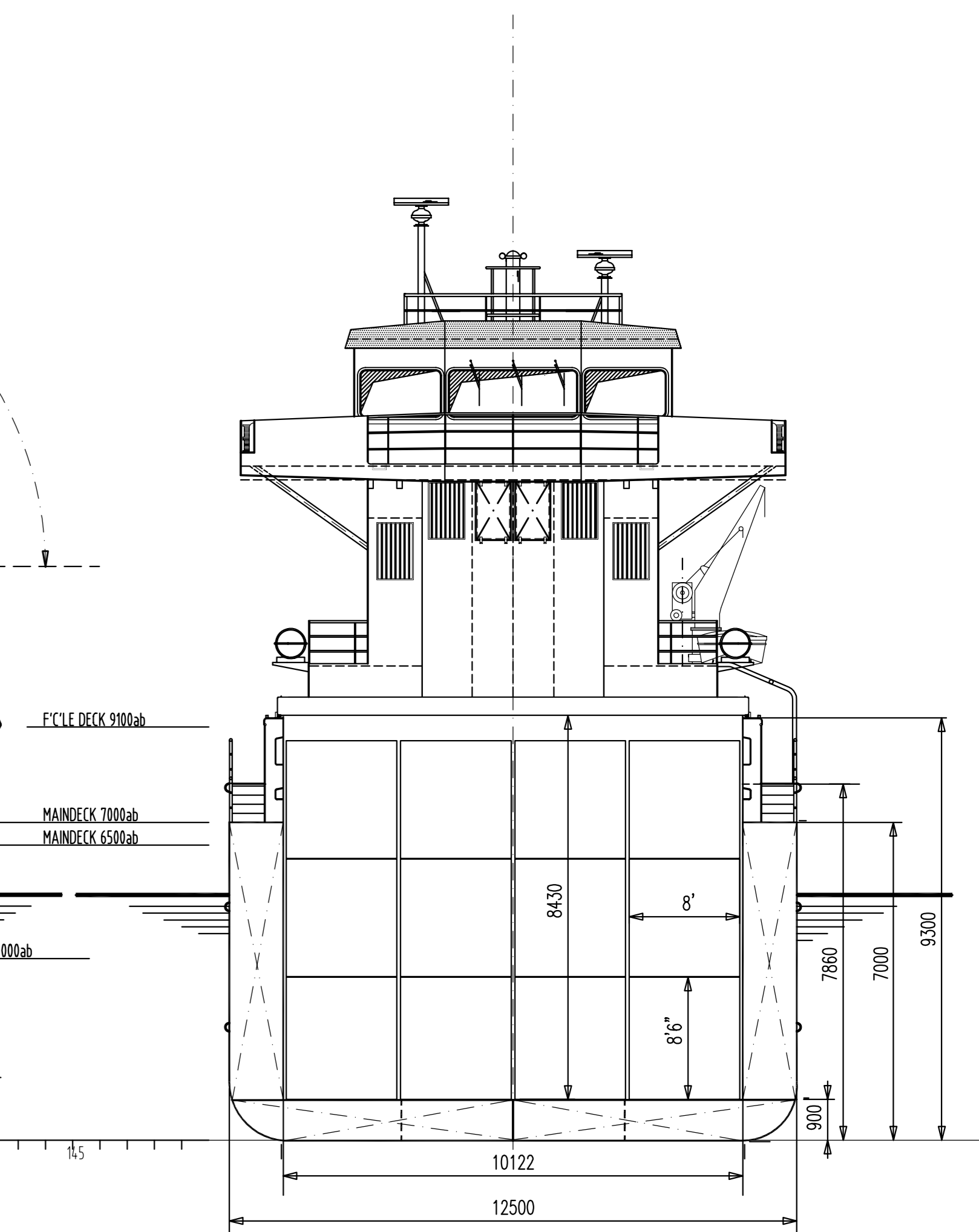
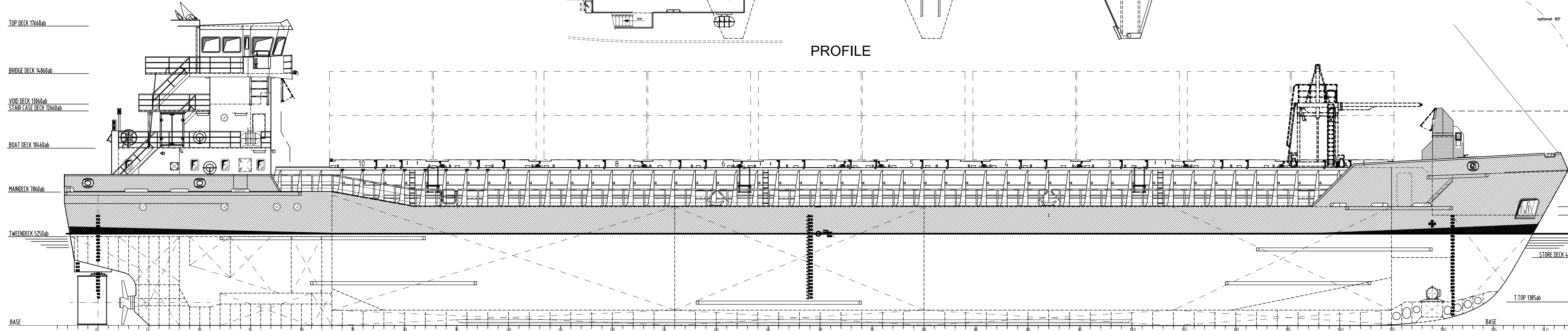
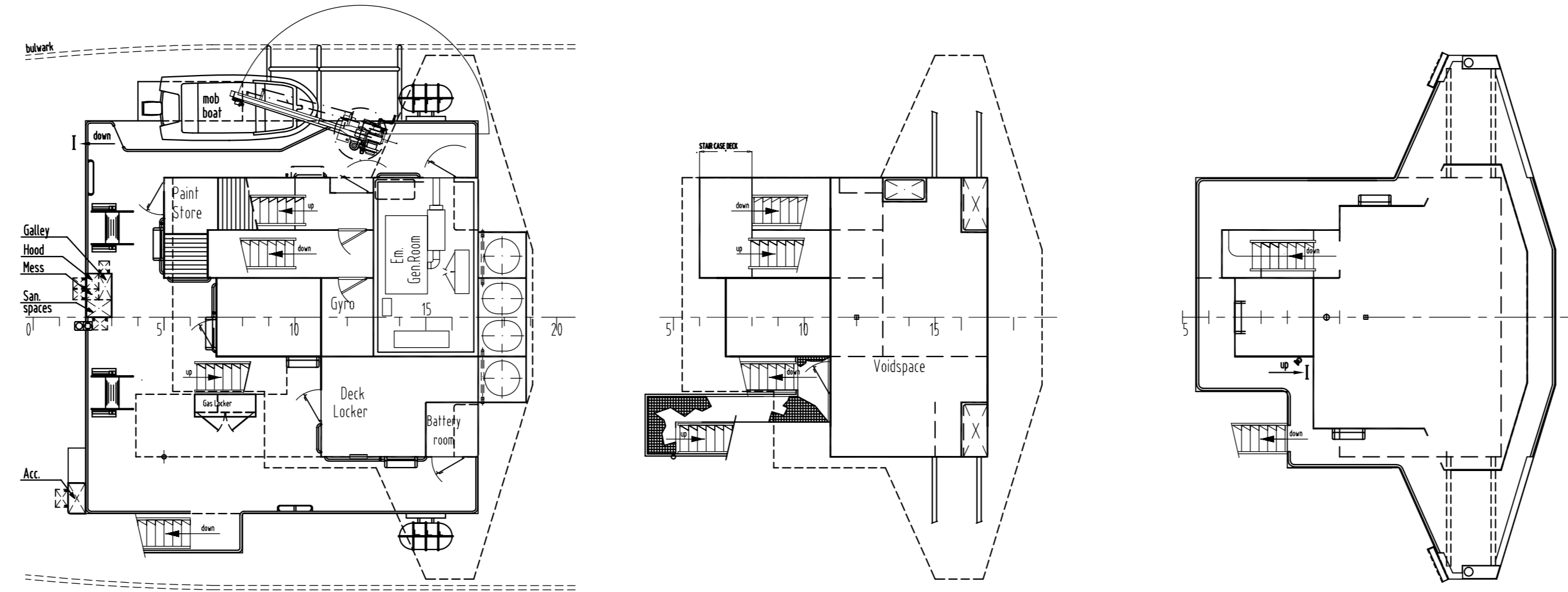
*All details believed to be true but no guarantees given.*

BOATDECK

VOIDDECK

BRIDGEDECK

CROSS SECTION



**PRINCIPAL DIMENSIONS CF3850**

Length o.a.	88.60 m
L dpp	84.99 m
B moulded	12.50 m
Depth to maindeck	7.00 m
Draft, ballast	m
Draft, max.	5.42 m
Deadweight at 5.42 m approx.	3800 ton
Hold capacity approx.	5250 m <sup>3</sup>
Tank capacity:	
Ballast approx.	1340 m <sup>3</sup>
HFO approx.	158 m <sup>3</sup>
Gas Oil approx.	55 m <sup>3</sup>
Potable water	55 m <sup>3</sup>
Lubrication oil	8.6 m <sup>3</sup>
Sewage	12 m <sup>3</sup>
Dirty oil	6 m <sup>3</sup>
Sludge	6 m <sup>3</sup>
Coolwater drain	2.6 m <sup>3</sup>
Container capacity:	
In hold	108 TEU
On Hold	80 TEU
Total	188 TEU
Tonnage about:	2545 GT
Class:	LRS, +100A1-LMC, UMS