

SHIP'S PARTICULARS



MV 'FEHN MIRAGE'

Administrative Details	
Shipsname	MV FEHN MIRAGE
Nationality	Gibraltar
Port of Registry	Gibraltar
Call Sign	ZDFC3
IMO No.	9252929
MMSI	
Class	GL+100 A5 E, G SOLAS-II-2, Reg.19,
Type of Vessel	General cargo ship with double hull, equipped for carriage of containers, strengthened for heavy cargo (SOLAS II-2 Re. 54), sea rhine trader. Grain and timber fitted
Build:	Slovenske Lodenice Komarno A.S Prevadzka, Slovakia, yard no. 1712
Accommodation	
Date launched	2002
Date Delivered	2002
Gir/gearless	Gearless

Vessel's Characteristics	
Gross Tons	2061
Nett Tons	1161
Deadweight	abt 2974
LOA	88,49m
LPP	84,96m
Beam Moulded	11,35m
Depth Moulded	
Summer draught	4,94m
Summer deadweight	abt 2974
Container capacity	48 TEU on deck, 78 TEU in hold
FW capacity	23 cbm
Draft	4,94m
Height above keel:	12,60 m bridges and mast in lower pos. 25,10 m bridges and mast in upper position
Airdraft	20,5 m (basis full ballast)
Ballast Capacity	1145 cbm

Operational Characteristics	
Main engine - Type	Deutz SBV 6M 628, 1125 kW
Generators	2 Generators 175 kVA
Emergency generator	100 kVA
Shaft generator	116 kVA
Bowthruster	Yes
Average speed:	abt. 10,5 knt
Daily consumption abt.	4,5 mt MGO (at 10,5 kn) 3,0 mt MGO (at "half speed") 2,0 mt MGO (at "slow speed")
GO capacity	135, cbm
LO capacity	12 M ³
Nautical equip./comm.	Fitted with all modern equipment fully GMDSS fitted

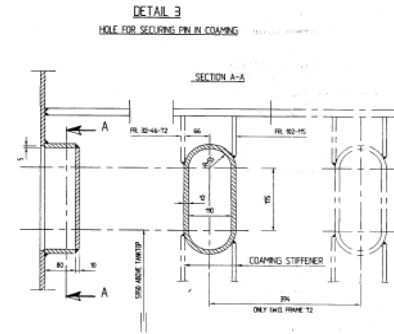
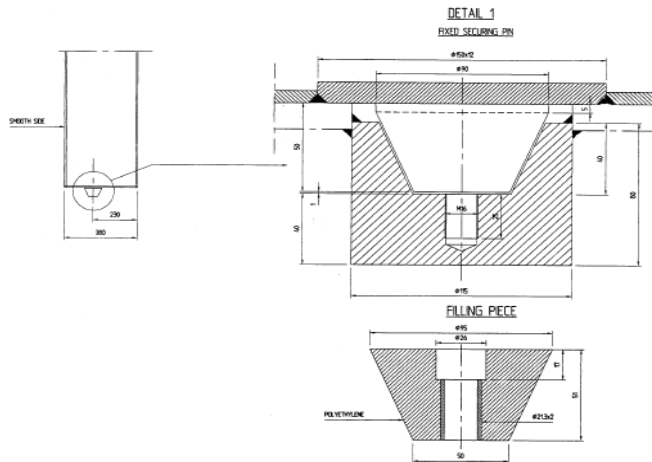
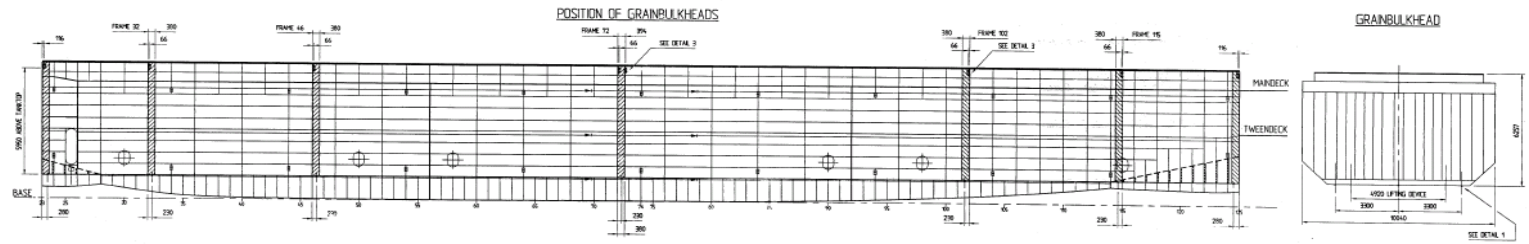
Ship`s Phone Numbers	
MOB +49 171 5684230	
Telex INMARSAT C:	423601710@SkyFile-C.com
E-mail:	charterer.FehnMirage@telaurus.net
Emergency Contact nrs.	
DPA	
24/7 HRS DUTY BACK UP	

Hold Characteristics	
One hatch	57.5 m x 9.0 m
One hold (incl bulkheads)	57.5 m x 9.0 m x 8.04 m
Strenght on main deck:	1,6 t / sqm
Strength on tank top	12 t / sqm
Grain/Bale Space	abt 4165 cbm
Reefer plugs	6
Hold ventilation	Yes, 6 per hour
Hatch cover type	Mac Gregor
Dangerous goods	Yes
Naabsa	

Owners	
	Hafenstraße 15
Fehn Ship Management GmbH	26789 Leer Germany
Operators	
Peak Shipping AS	Tel: 0047 55 53 52 00
Litleaasveien 49	chartering@peakshipping.no
5132 Nyborg, Norway	operation@peakshipping.no
Managers	
Fehn Ship Management GmbH	Phone + 49 (0) 491 928 15 – 5
Hafenstrase 15	Fax + 49 (0) 491 928 15 – 99
26789 Leer	
Germany	info@fehnsip.de

All details believed to be true but no guarantees given

02.11.2015



When bulkhead is not in position, hole to be closed with a polyethylene filling piece, secured by a stl. hex. socket head cap screw 1/4" x 60.

revision	date	name	revision	date
01	08-10-97			

DAMEN SHIPYARDS P.O. Box 7 1200 AA Breda, Holland Telefoon: (011) 447121 Telefax: (011) 447219					
Position of Grain Bulkheads					
date	20-09-94	drawn	01/95	checked	1000/013
desig. to draw no.		desig. fr. draw no.	506-11-0-01-321		
draw no.	0310/0311	draw no.	0310-10-01-322		

COMPILED BY DAMEN SHIPYARDS